



Certified~Licensed~Insured

631~324~4281

www@sperberlandscapes.com

info@sperberlandscapes.com

“Landscape Design~Construction~Property Management Since 1985!”

November “Garden Tips”... countdown to winter

As the season starts to close down for a rest, we are reminded that there are still items to take care of, as well as providing all the energy your landscape needs to flourish next season.

Our suggestions have been determined by our experience over many seasons and need your consideration. We are thankful to you, as it has been our privilege to satisfy your trust in us by providing care, concern, and ideas for your landscape.



Early November your grass is happy and green, the beneficiary of cool weather and the energy provided through fertilizing earlier in the fall. If your lawn contains Bermuda or zoysia grasses that prefer hot weather, they shut down for a long winter's rest.

From mid-October until your turf goes dormant, the energy from fertilizer is mostly used for growing root systems. In many cases, the grass plants are re-growing their root systems which were reduced during the hot weather. (Bermuda and zoysia grasses grow their roots best during the summer.)

With adequate fertilizer, all grasses produce sugars to increase their endurance to get through the cold winter, and then still have enough energy left to vibrantly come out of dormancy next spring.

Your trees and shrubbery need a helping hand as well, because they too are programmed to grow more roots during the fall.

Traditionally, fertilizing of shrubbery is put off until there is no chance of stimulating new tender growth that could get damaged during the winter. Trees shut down in early fall as their leaves begin to drop, so late summer to early fall fertilizing won't stimulate tender growth.

Fall fertilizing of trees and shrubs also provides for next spring's use, by being on hand and available *as the plants need it*, because the fertilizer becomes incorporated into the soil.

If only from the standpoint of supplying energy for growing more roots (the essential foundation for plant health & beauty), fall fertilizing is very important for your entire landscape.



By The End of November, One Knows Winter Is Coming!

Knowledge and Wisdom Combine for Economical Care

Knowledge is most often regarded as the key to effective landscape care.

But, we submit that “wisdom” is the most important ingredient for enlightened economical landscape care.

Sure, one can know all about plants, chemicals, procedures, but it is the ‘wisdom’ garnered through years of practical application and observations that separates one professional practitioner from another.

We do not claim that we have achieved complete knowledge or wisdom. But, we do strive year by year to always use what we have experienced to provide the most economical professional care for your landscape's health, and for your enjoyment.

(c) November 2022 . All rights reserved .

Gardening Notes

Checklist for Winter

- [] Trees, shrubbery and sod can be planted late into the fall instead of waiting until the too-busy spring.
- [] Spring bulbs can still be planted until the ground freezes.
- [] Check for needed pruning of tree limbs that could break off, causing damage or interrupting phone or electric services.
- [] Use sharp pruners to prune *taxus*, *holly*, *spruce* and *others*; you could store branches in a cold place for later holiday decorations. Be sure to cut above a bud or side branch.
- [] Bring in your garden hoses; winterize the sprinkler system; turn off inside, your outside water faucets.
- [] Obtain supplies of sand or kitty litter as ice control materials. Please limit salt use as much as possible because salt will damage turf, your shrubbery and trees.
- [] Store firewood outdoors to keep bugs out of your house.
- [] Clean leaders and gutters of leaves and debris.

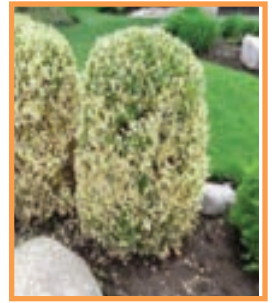


Snowdrops: are among the first bulbs to show in late winter/early spring. Plant them now while you can.

Your Tree/Shrub Audit May Reveal:

Scale Insects . . .

If your landscape contains privet, euonymus varieties or ornamental fruit trees, there may still be scale insects feeding, and really do need to be controlled with a horticultural oil spray. Also, *all* insect-damaged plants could benefit from a fertilizer application.

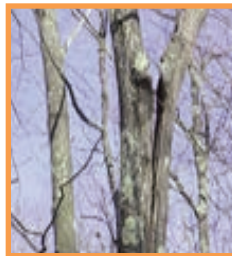


Girdling Roots . . .

The danger to the tree's health and survival increases as the tree grows. It is literally being strangled.

A sure sign your tree has a girdling root, whether you can see it or not, is that the trunk is not round; it shows one or more flattened areas.

Unfortunately, not all girdling roots can be removed when the tree gets more mature. Therefore, it is imperative to *as early as possible* find and remove the root, or roots that will choke your tree into an unhealthy state; even death.



Pruning Where Needed . . .

You do not want to be caught with troubled, weak crotches or dead branches during any winter.

Wind and ice storms could devastate the trees as well as cause serious damage to other plantings, to your home, and even sever electrical wires.

Get a professional survey and help now.

Professional arborists and dentists have one thing in common: they don't get called until "it hurts!"
Your teeth will do better with at least a yearly inspection.
Your trees will also do better with a yearly inspection!!!
With pruning & fertilizing they'll not only look better, they'll be healthier.
We are alerting you above with just some common problems that should be taken care of professionally.

It's Time To Turn Your Gardening Passion Indoors

Numerous studies conclude that having live plants growing indoors is beneficial to one's health.



Vertical Gardening is understandably getting more popular. Consider a wall planting designed with various colored miniature plants like sedum.



Cloche Gardening is another idea: plants under glass require very little watering - but keep out of strong light and maybe prop one side up for a little ventilation.

Here is a neat, practical way to display tropical plants in your home, as well as to grow vegetables & herbs.

You can get a turning base to distribute light evenly.

You'll get more information, ideas and models at this website:
greenstalkgarden.com



Our Intent Is To Share Our Knowledge & Ideas for The Benefit of You & Your Landscape!